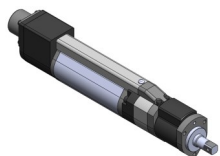
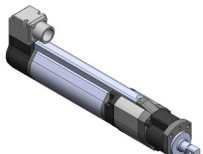


AFC 3000 Tool & Controller Specifications

STRAIGHT TOOLS



CFT Standard Model



CFT "L" Model

Part Number	Max. Torque (Nm / ft-lbs)	Max. RPM	Sq. Drive (mm / in)	Total Length (mm / in)	Min C to C (mm / in)	Weight (kg / lbs)
CFT-101RS1-S	10 / 7.3	3000	9.5 / 3/8	275 / 10.8	39.6 / 1.56	1.3 / 2.9
CFT-201RS1-S	20 / 14.7	1293	9.5 / 3/8	290 / 11.4	39.6 / 1.56	1.4 / 3.0
CFT-281RS1-S	28 / 20.6	992	9.5 / 3/8	293 / 11.5	39.6 / 1.56	1.4 / 3.0
CFT-401RS1-S	40 / 29.5	712	9.5 / 3/8	293 / 11.5	39.6 / 1.56	1.4 / 3.0
CFT-801RS3-S	80 / 59	1015	12.7 / 1/2	372 / 14.6	50.6 / 1.99	3.4 / 7.5
CFT-132RS3-S1	130 / 96	574	12.7 / 1/2	372 / 14.6	50.6 / 1.99	3.4 / 7.5
CFT-202RS3-S	200 / 147	387	15.9 / 5/8	390 / 15.4	59.6 / 2.35	4.3 / 9.5
CFT-302RS3-S	300 / 221	260	19 / 3/4	440 / 17.3	71.6 / 2.81	5.8 / 12.8

"L" at end of model denotes connector exits towards square drive of tool (Ex. CFT-132RS3-SL)
 (Note: connector on "L" style tool is rotatable in 90 degree increments if connector position to the side is desired)

Compatible NFT tools



NFT "A" Model

Part Number	Max. Torque (Nm / ft-lbs)	Max. RPM	Sq. Drive (mm / in)	Total Length (mm / in)	Min C to C (mm / in)	Weight (kg / lbs)
NFT-010RM1(A)-SA	.98 / .72	1100	9.5 / 3/8	329 / 12.9	41 / 1.61	2.0 / 4.4
NFT-051RM1(A)-S	4.9 / 3.6	1100	9.5 / 3/8	243 / 9.57	41 / 1.61	1.9 / 4.2
NFT-502RM4H-S	490 / 361	190	25.4 / 1.0	450 / 17.7	88 / 3.46	13.5 / 30
NFT-802RM4H-S	784 / 578	120	25.4 / 1.0	516 / 20.3	96 / 3.78	15 / 33
NFT-113RM4H-S	1078 / 794	95	38 / 1.5	618 / 24.3	99 / 3.89	22 / 48
NFT-153RM4H-S	1470 / 1083	70	25.4 / 1.0	633 / 24.9	132 / 5.2	29 / 64

Compatible MFT tools (Micro-Nutrunner)

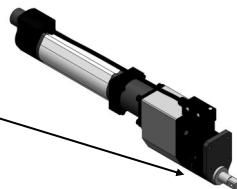


MFT Model

Part Number	Max. Torque (Nm in-lbs)	Max. RPM	Hex Drive (mm / in)	Total Length (mm / in)	Min C to C (mm / in)	Weight (kg / lbs)
MFT-080M10-S1	0.80 / 7.1	1100	6.35 / 1/4	215 / 8.5	32 / 1.26	0.68 / 1.5
MFT-240M10-S	2.4 / 21.2	600	6.35 / 1/4	215 / 8.5	32 / 1.26	0.68 / 1.5

OFFSET TOOLS

Torque Transducer located in front of offset transmission for high accuracy fastening



Part Number	Max. Torque (Nm / ft-lbs)	Max. RPM	Sq. Drive (mm / in)	Total Length (mm / in)	Min C to C (mm / in)	Weight (kg / lbs)
CFT-201RS1-O	20 / 14.7	1293	9.5 / 3/8	355 / 14.0	30.6 / 1.20	2.3 / 5.0
CFT-401RS1-O	40 / 29.5	712	9.5 / 3/8	372 / 14.7	30.6 / 1.20	2.4 / 5.3
CFT-801RS3-O	80 / 59	1015	12.7 / 1/2	489 / 19.3	36.6 / 1.44	5.9 / 13
CFT-132RS3-O1	130 / 96	574	12.7 / 1/2	514 / 20.2	40.6 / 1.60	7.1 / 15.7
CFT-202RS3-O	200 / 147	387	15.9 / 5/8	536 / 21.1	46.6 / 1.83	8.6 / 19
CFT-302RS3-O	300 / 221	260	19 / 3/4	572 / 22.5	57.6 / 2.27	12.6 / 27.8

"L" at end of model denotes connector exits towards square drive of tool (Ex. CFT-132RS3-OL)
 (Note: connector on "L" style tool is rotatable in 90 degree increments if connector position to the side is desired)

Compatible NFT tools

Part Number	Max. Torque (Nm / ft-lbs)	Max. RPM	Sq. Drive (mm / in)	Total Length (mm / in)	Min C to C (mm / in)	Weight (kg / lbs)
NFT-502RM4H-O	490 / 361	190	25.4 / 1.0	692 / 27.2	61 / 2.4	23.5 / 52
NFT-802RM4H-O	784 / 578	120	25.4 / 1.0	788 / 29.8	69 / 2.7	31 / 68
NFT-113RM4H-O	1094 / 806	84	38 / 1.5	819 / 32.2	89 / 3.5	51 / 112

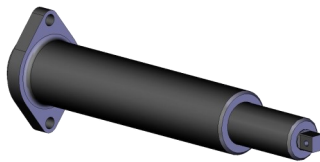
CONTROLLERS



Showing optional Fieldbus and CF Modules installed

Model	Tool Model	Width (mm / in)	Height (mm / in)	Depth (mm / in)	Weight (kg / lbs)
MFC-S008	MFT	56 / 2.2	235 / 9.3	170 / 6.7	1.4 / 3.1
MFC-S024	CFT-xxxRS1 NFT-xxxRM1	56 / 2.2	235 / 9.3	170 / 6.7	1.4 / 3.1
MFC-S060	CFT-xxxRS3 NFT-xxxRM3	56 / 2.2	235 / 9.3	170 / 6.7	1.6 / 3.5
MFC-S120	NFT/CFT-xxxRM4	95 / 3.7	235 / 9.3	170 / 6.7	3.2 / 7.1
Optional Modules					
MFC-CF (Compact Flash)	N/A	36 / 1.4	138 / 5.4	135 / 5.3	.4 / .9
MFC-CC (CCLINK)	N/A	36 / 1.4	96 / 3.8	135 / 5.3	.2 / .4
MFC-DN (Devicenet)	N/A	36 / 1.4	96 / 3.8	135 / 5.3	.2 / .4
MFC-PB (Profibus)	N/A	36 / 1.4	96 / 3.8	135 / 5.3	.2 / .4
MFC-PN (Profinet)	N/A	36 / 1.4	96 / 3.8	135 / 5.3	.2 / .4
MFC-EN (Ethernet IP)	N/A	36 / 1.4	96 / 3.8	135 / 5.3	.2 / .4
MFC-DT (Discrete-I/O)	N/A	36 / 1.4	96 / 3.8	135 / 5.3	.2 / .4
MFC-EC (EtherCat)	N/A	36 / 1.4	96 / 3.8	135 / 5.3	.2 / .4

SPINDLE ASSEMBLY



Model	Tool Model	Max. Torque (Nm / ft-lbs) (mm / in)	Length (mm / in)	Stroke (mm / in)	Square Drive (mm / in)
SA-3S1-2-38-38	CFT-101, 201, 301, 401	40 / 29.5	213 / 8.4	50 / 2.0	9.5 / .38
SA-3S3-2-50-50	CFT- 801, 132	130 / 96	215 / 8.5	50 / 2.0	12.7 / .50
SA-3S3-2-62-62	CFT-202	200 / 148	231 / 9.1	50 / 2.0	15.8 / .63
SA-3S3-2-75-75	CFT-302	300 / 221	235 / 9.3	50 / 2.0	19.0 / .75
SA-3S1-3-38-38	CFT-101, 201, 301, 401	40 / 29.5	264 / 10.4	75 / 3.0	9.5 / .38
SA-3S3-3-50-50	CFT- 801, 132	130 / 96	266 / 10.5	75 / 3.0	12.7 / .50
SA-3S3-3-62-62	CFT-202	200 / 148	268 / 10.6	75 / 3.0	15.8 / .63
SA-3S3-3-75-75	CFT-302	300 / 221	273 / 10.7	75 / 3.0	19.0 / .75

Spindle Assemblies take up the "stroke" of bolt movement as it is run down.
 Standard models shown - optional lengths, strokes and square drives available.
 For Offset spindle assemblies, change "SA" to "OA" in the part number



AUTOMATION
SYSTEMS

For drawings or more information visit www.fec-usa.com