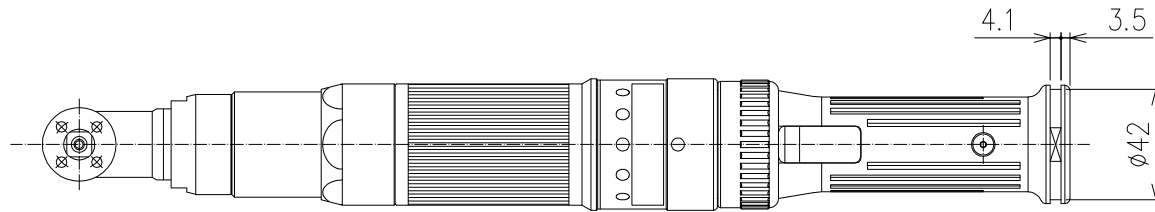
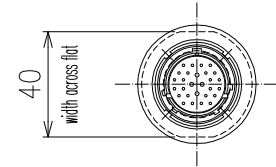
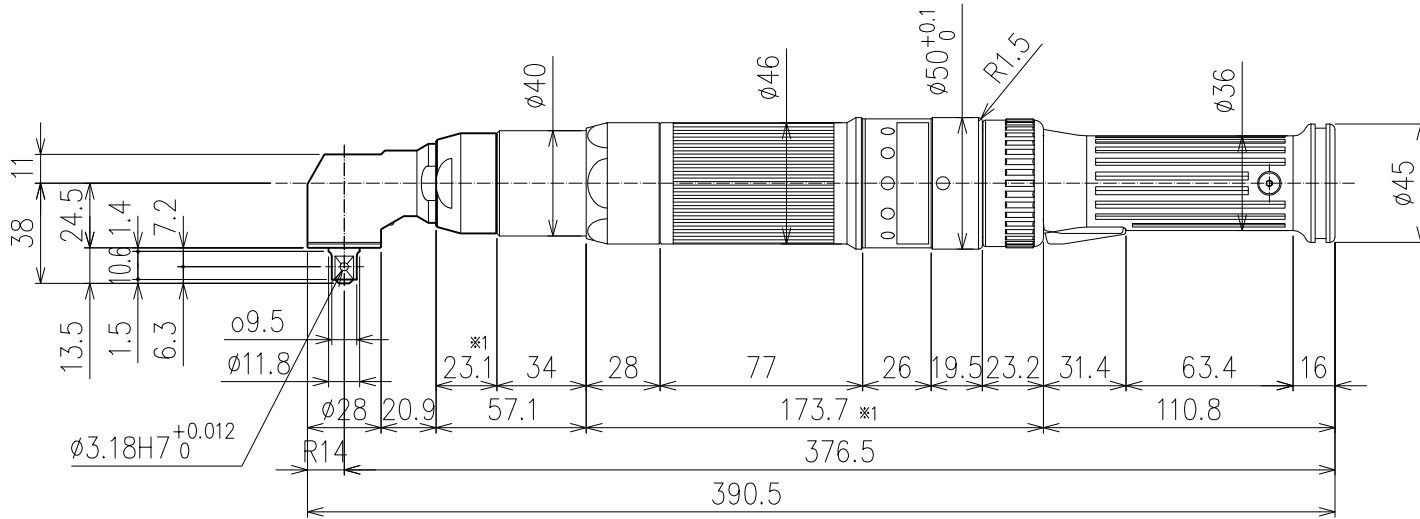
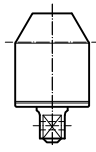
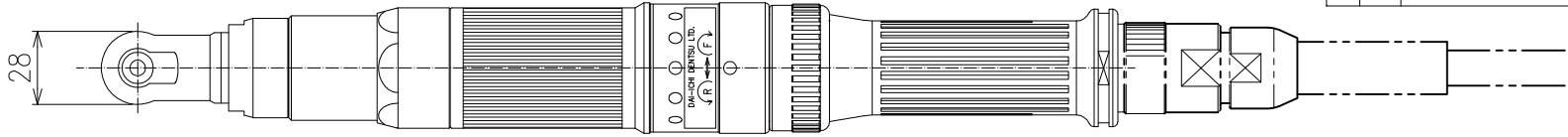


CHANGES			
SYM.	BY	REVISION	DATE



FULL SCALE TORQUE: 25 Nm
 MAX FREE SPEED: 1070 RPM
 WEIGHT: 1.7 Kg (3.8 Lbs.)

※1 DO NOT ATTACH ANY HANGING ACCESSORIES WITHIN THIS SPECIFIED AREA

TOLERANCE UNLESS OTHERWISE SPECIFIED

INCH	METRIC
.XX=±.01	.X=±.25
.XXX=±.005	.XX=±.127
.XXXX=±.0005	.XXX=±.0127
ANGLE=±.5°	ANGLE=±.5°

- DO NOT SCALE DRAWING.
- BREAK ALL SHARP CORNERS & EDGES EXCEPT AS NOTED.
- USE HI-COLLAR LOCKWASHERS UNDER ALL SOC. HD. SCREWS.
- APPLY LOC-TITE TO ALL SCREWS.

NOTICE OF PROPRIETARY RIGHTS
 The design concepts and engineering detail embodied in this drawing are the property of FEC INC. and are to be maintained in strict confidence; no element or detail of this drawing is to be disclosed nor used without the express written permission of FEC INC.

AMT	SYM	SHT	NAME	PART #	MFG.

DES.BY: FEC
 CHK.BY: FEC
 DATE: 08/22/12
 SHEET: 1

DET.BY: FEC
 SAFETY OK: FEC
 SCALE: N/A
 SHEETS: 1

TITLE: OUTLINE DRAWING FOR HFT-025M80-A1-10
 DRAWING NO.: HFT-025M80-A1-10

FASTENING AUTOMATION www.fec-usa.com