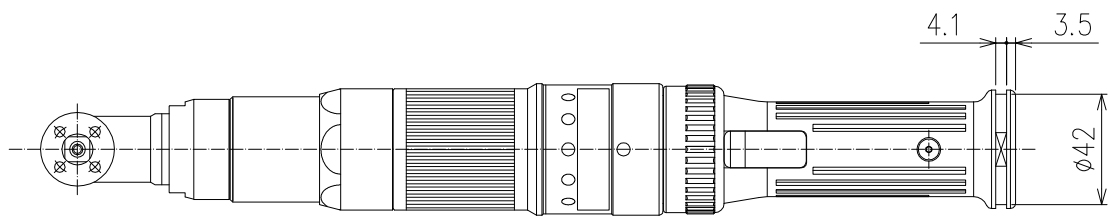
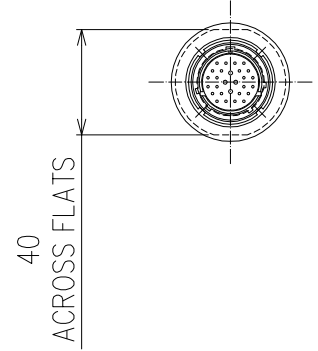
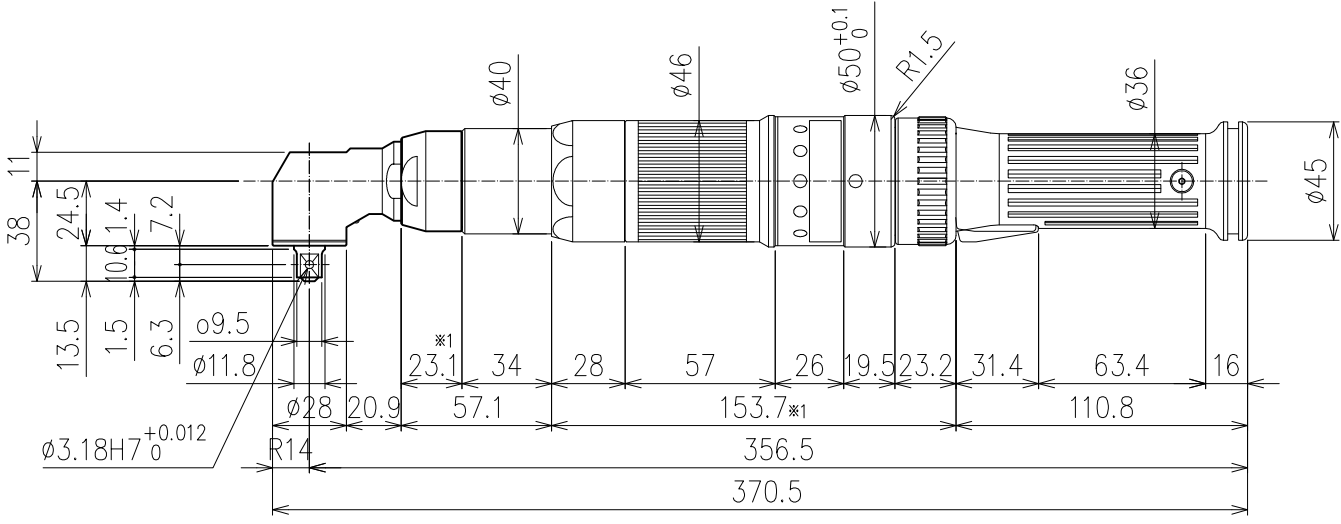
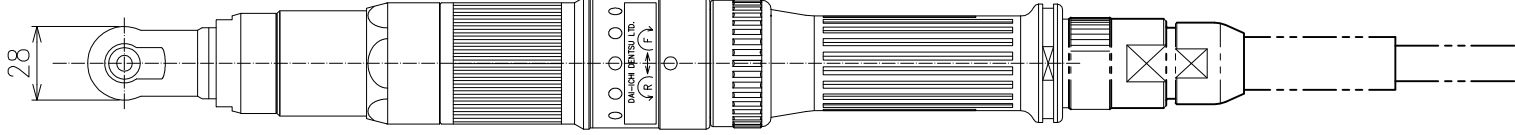


CHANGES			
SYM.	BY	REVISION	DATE
.	.	.	.



TOLERANCE UNLESS OTHERWISE SPECIFIED
 INCH METRIC
 .XX=±.01 .X=±.25
 .XXX=±.005 .XX=±.127
 .XXX=±.0005 .XXX=±.0127
 ANGLE=±.5° ANGLE=±.5°

- DO NOT SCALE DRAWING.
- BREAK ALL SHARP CORNERS & EDGES EXCEPT AS NOTED.
- USE HI-COLLAR LOCKWASHERS UNDER ALL SOC. HD. SCREWS.
- APPLY LOC-TITE TO ALL SCREWS.

NOTICE OF PROPRIETARY RIGHTS
 The design concepts and engineering detail embodied in this drawing are the property of FEC INC. and are to be maintained in strict confidence; no element or detail of this drawing is to be disclosed nor used without the express written permission of FEC INC.

FULL SCALE TORQUE: 15 Nm
 MAX FREE SPEED: 1215 RPM
 WEIGHT: 1.6 Kg (3.5 Lbs.)

※1 DO NOT ATTACH ANY HANGING ACCESSORIES WITHIN THIS SPECIFIED AREA

AMT	SYM	SHT	NAME	PART #	MFG.

DESIGN BY: FEC
 CHECKED BY: SAFETY OK
 DATE: 08/22/12
 SHEET: 1

DET. BY: FEC
 SCALE: N/A
 SHEETS: 1

TITLE: OUTLINE DRAWING FOR HFT-015M50-A1-10
 DRAWING NO. HFT-015M50-A1-10

FASTENING AUTOMATION www.fec-usa.com