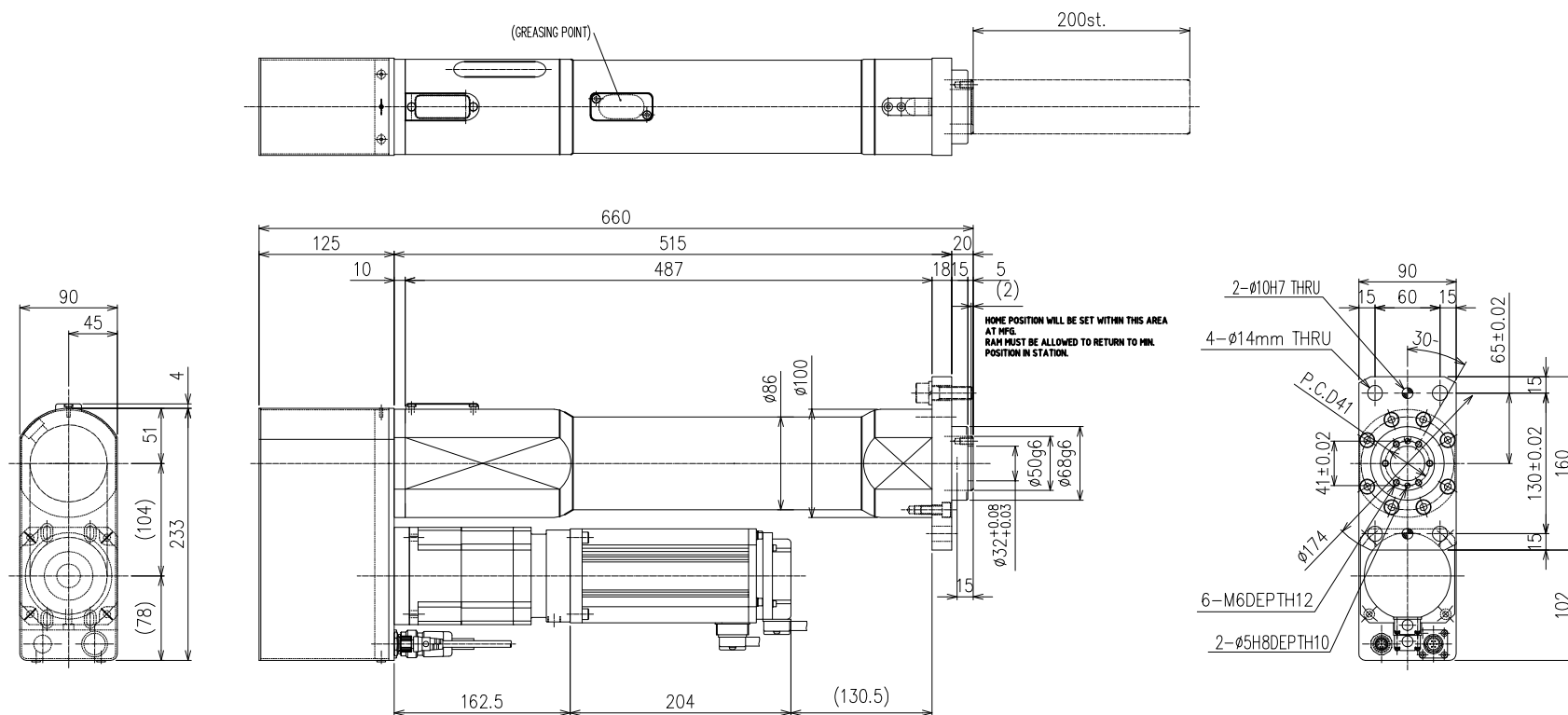


[illegible]

30kN Slimline	
Maximum Load	30 kN
Max. Continuous Load	30 kN
Max. Speed	53 mm/sec
Std. Stroke	200 mm
Weight	38 kgf
Load Accuracy*	$3\sigma/X \leq 1.5\%$
Distance Repeatability*	$\leq 0.01\text{mm}$
SENSOR OUTPUT	NPN

*When load is constant.

TOLERANCE UNLESS OTHERWISE SPECIFIED	
INCH	METRIC
.XX±.01	.X±.25
.XXX±.005	.XX±.127
.XXXX±.0005	.XXX±.0127
ANGLE±.5°	ANGLE±.5°

1. DO NOT SCALE DRAWING.
2. BREAK ALL SHARP CORNERS & EDGES EXCEPT AS NOTED.
3. USE M-COLLAR LOCKWASHERS UNDER ALL SOC. HD. SCREWS.
4. APPLY LOC-TITE TO ALL SCREWS.

NOTICE OF PROPRIETARY RIGHTS
The design concepts and engineering detail embodied in this drawing are the property of FEC INC. and are to be maintained in strict confidence; no element or detail of this drawing is to be disclosed nor used without the express written permission of FEC INC.

[illegible]