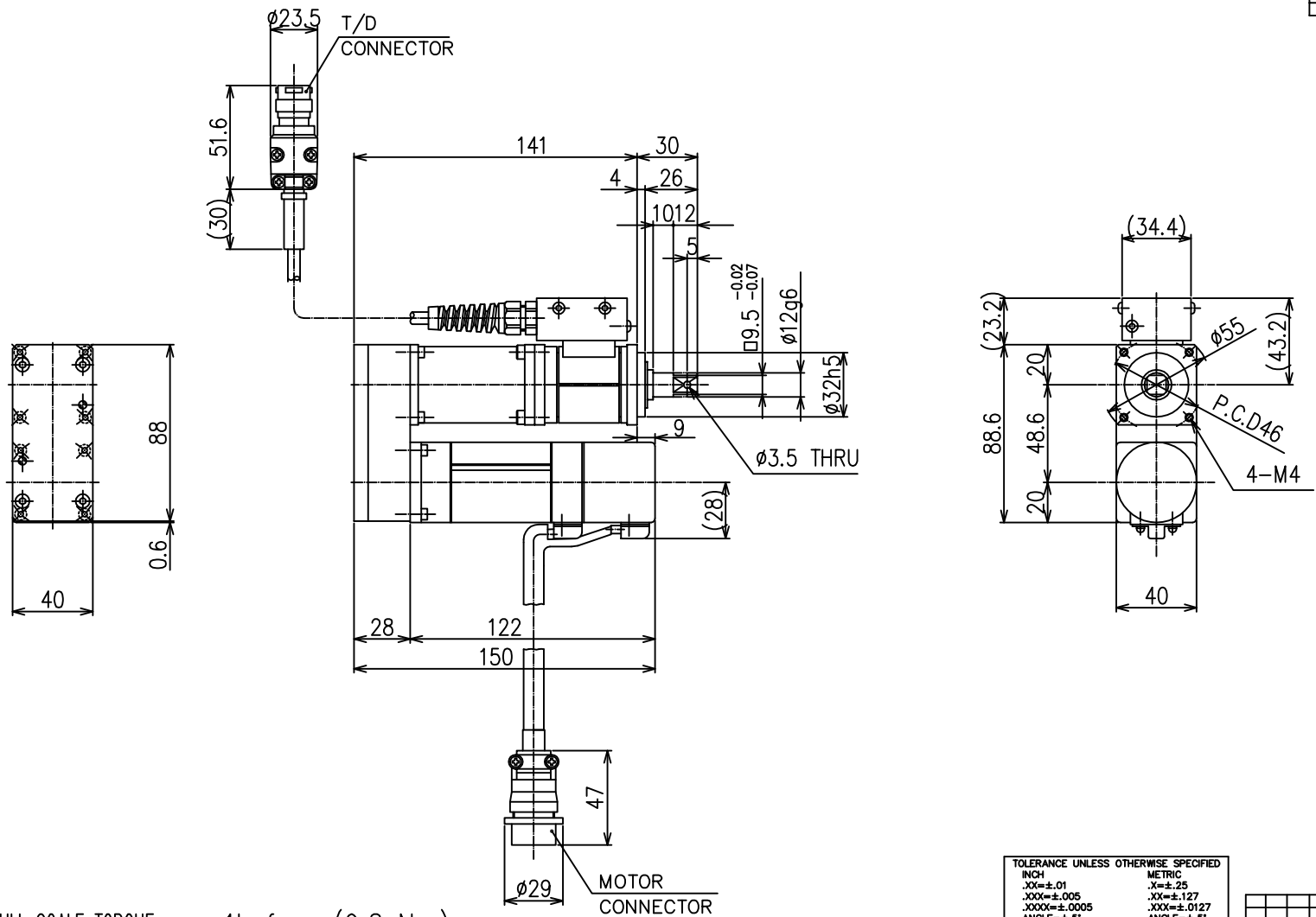


CHANGES			
SYM.	BY	REVISION	DATE
-	BMB	CHANGED TO ENGLISH	24/12/07



- 1. FULL SCALE TORQUE 1kgf-m (9.8 Nm)
- 2. MAX FRF SPEED 500R.P.M
- 3. WEIGHT

TOLERANCE UNLESS OTHERWISE SPECIFIED
 INCH METRIC
 .XX=±.01 .X=±.25
 .XXX=±.005 .XX=±.127
 .XXXX=±.0005 .XXX=±.0127
 ANGLE=±.5° ANGLE=±.5°

- DO NOT SCALE DRAWING.
- BREAK ALL SHARP CORNERS & EDGES EXCEPT AS NOTED.
- USE HI-COLLAR LOCKWASHERS UNDER ALL SOC. HD. SCREWS.
- APPLY LOC-TITE TO ALL SCREWS.

NOTICE OF PROPRIETARY RIGHTS
 The design concepts and engineering detail embodied in this drawing are the property of FEC INC. and are to be maintained in strict confidence; no element or detail of this drawing is to be disclosed nor used without the express written permission of FEC INC.

AMT	SYM	SHT	NAME	PART #	MFL

DES BY FEC	DET BY FEC	TITLE TOOL OUTLINE
CHK BY FEC	SAFETY OR FEC	
DATE 09/08/01	SCALE FULL	
SHEET	SHEETS	DRAWING NO. NFT-101RM1-SIU