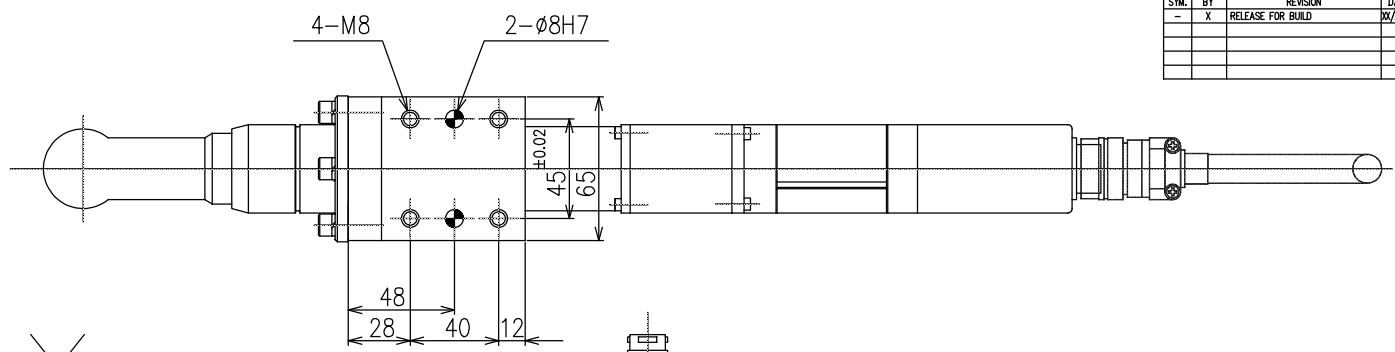
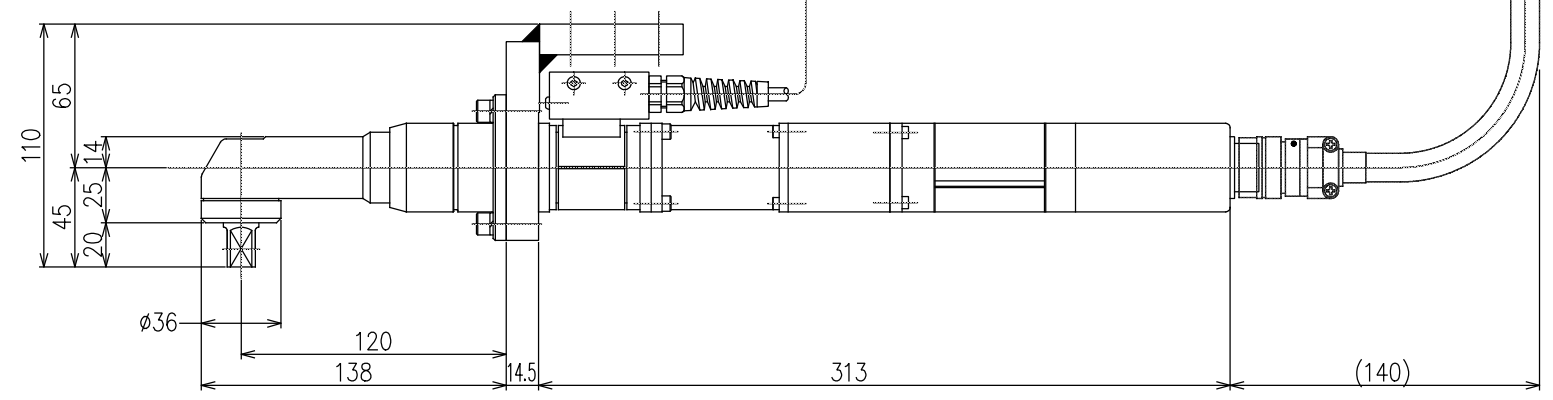
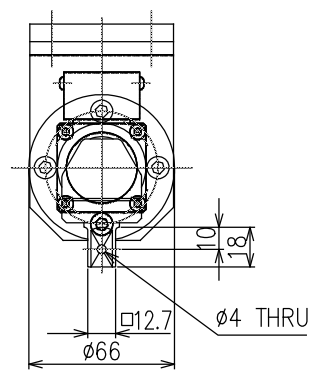


CHANGES			
SYL	BY	REVISION	DATE
-	X	RELEASE FOR BUILD	02/02/02



REF. ONLY



Model	Max. Torque	Max. Speed
201(2Kgfm)	3Kgfm	330rpm
401(4Kgfm)	5.5Kgfm	165rpm

\*Use under 90% of Max. Capability.

- TOLERANCE UNLESS OTHERWISE SPECIFIED  
 INCH METRIC  
 .XX=±.01 .X=±.25  
 .XXX=±.005 .XX=±.127  
 .XXXX=±.0005 .XXX=±.0127  
 ANGLE=±.5° ANGLE=±.5°  
 1. DO NOT SCALE DRAWING.  
 2. BREAK ALL SHARP CORNERS & EDGES EXCEPT AS NOTED.  
 3. USE HI-COLLAR LOCKWASHERS UNDER ALL SOC. HD. SCREWS.  
 4. APPLY LOC-TITE TO ALL SCREWS.

**NOTICE OF PROPRIETARY RIGHTS**  
 The design concepts and engineering detail embodied in this drawing are the property of FEC INC. and are to be maintained in strict confidence, no element or detail of this drawing is to be disclosed nor used without the express written permission of FEC INC.

AMT	SYM	SHIT	NAME	PART #	MFG.

DESIGN BY FEC	DEBY FEC	TITLE ANGLE HEAD TOOL OUTLINE
CHK BY SAFETY OK		NFT-201/401RM1A-A55
DATE 11/26/02	SCALE 1/2	*THIS DRAWING IS REFERENCE ONLY
SHEET 1	SHEETS 1	DRAWING NO. NFT-201/401RM1A-A55